

This is a true copy of the Original Plat of Record of "BRIDGE ROAD BLOCKS" Plat Book II, Page 16, Palm Beach County, Florida, New Martin County.

TRACED BY: STUART BLUE PRINT & Drafting Service. Charles H. Clark

UNDER THE SUPERVISION OF Paul A. Stafford REGISTERED LAND SURVEYOR FLORIDA CERTIFICATE NO. 443

State of Florida } ss
County of Palm Beach }
This instrument was filed for record at 5:00
This 9th day of February 1925 and duly recorded on
the 9th day of February 1925 in Book II of Plats on
Page 16, Record Varified.
Paul A. Stafford
CLERK, CIRCUIT COURT
BY: Paul A. Stafford
DEPUTY CLERK

State of Florida } ss.
County of Palm Beach }

KNOW ALL MEN BY THESE PRESENTS, that the "MALCOLM MEACHAM REALTY CORP." a corporation organized and existing under the laws of the State of Florida the owners in fee simple of the tract of land shown on the attached plat as "BRIDGE ROAD BLOCKS" and more particularly described as follows:

Being all that part as shown on the attached plat of lots 68, 69 & 70 of the plat of Jupiter Island as recorded in Plat Book I, Page 80, Public Records of Palm Beach County, Florida.

have caused the same to be surveyed and platted as shown on the attached plat and do hereby dedicate to the perpetual use of the public as public highways the roads, alleys and boulevard, as shown on the attached plat, reserving, however, unto itself, its heirs, successors, assigns or legal representatives, the reversion or reversions of the same whenever abandoned by the public or discontinued by law.

IN WITNESS WHEREOF, it has caused these presents to be signed by its president and attested by its secretary this 29th day of January A.D. 1925.

MALCOLM MEACHAM REALTY CORP.
by Malcolm Meacham
President

Attest Robert B. Austin
Secretary.

BRIDGE ROAD BLOCKS SITUATED AT OLYMPIA FLORIDA

OWNED BY THE

MALCOLM MEACHAM REALTY CORP.

Scale 1"=50'

Nov. 1924.

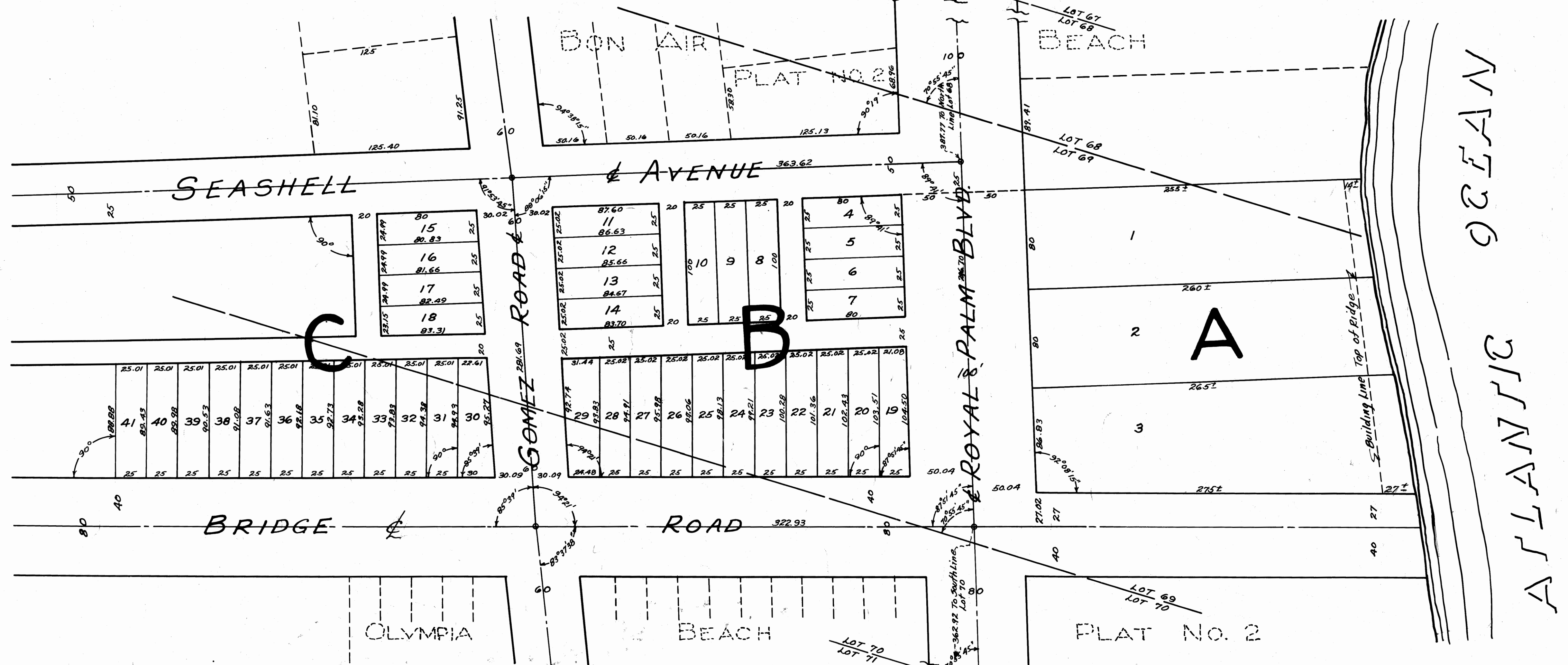
State of Florida } ss.
County of Palm Beach }

WE HEREBY CERTIFY that we have surveyed and platted the tract of land shown on the attached plat as "BRIDGE ROAD BLOCKS" and that said plat is correct representation thereof to the best of our knowledge and belief.

CARR & McFADDEN
By Paul M. Fadden
Fla. State Eng. Cert. No. 280

Subscribed and sworn to before me this 29th day of January A.D. 1925
My Commission expires Oct. 22, 1928.

H. C. Bartholomew
Notary Public



NOTE:
Lots 4 to 18 inclusive reserved for residence, business, hotel, and apartment house purposes, exclusive of garages or filling stations.
Lots 19 to 41 inclusive reserved for residence or business purposes, exclusive of hotels, garages and filling stations.

BRIDGE ROAD BLOCKS
CARR & McFADDEN INC.
CIVIL ENGINEERS
FLA. ENG. CERTS. NOS. 173 & 280
WEST PALM BEACH, FLORIDA.
DRAWING No. 2101